

Panda Fusion / Panda Fusion 360

Index :

1. Introduction
2. Is remote work a problem?
3. Don't let coronavirus paralyze your business
4. The solution Panda Systems Management: Centralized Remote Monitoring and Management RMM
5. The importance of protection against the growing number of cyberthreats
6. Panda Fusion. Advanced security, centralized management and remote support
7. Panda Fusion 360 – Automated advanced security, centralized management, and remote support

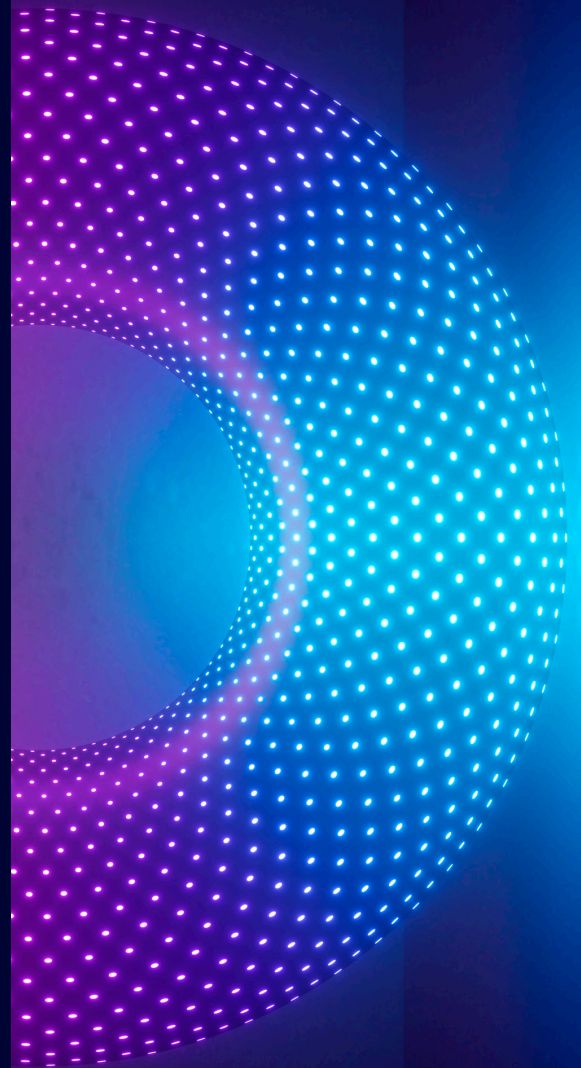


| Introduction

Why cybersecurity and remote management are more important than ever for businesses

In recent weeks, we've seen a great deal of news focusing on an unprecedented situation: the current coronavirus outbreak.

This crisis has put public and private institutions on high alert, forcing many organizations to adopt telework as a preventive measure to ensure the health of staff. Working remotely is the order of the day, but if the right tools are not available, it can pose a serious security risk and could mean a loss of control for your company.



|Is remote work a problem?

Many companies need their employees to work remotely “as normally as possible” and thus be able to maintain business as usual. However, this measure can lead to serious security problems.

Improvisation and a lack of experience when **implementing and controlling these measures can imply a series of risks** for the system such as: weak firewall configurations, use of unprotected computers and laptops (company or personal), uncontrolled Internet connections through home or shared Wi-Fi connections, accessing insecure websites, etc.

These **risks** result in **increased exposure to vulnerabilities and security threats** in systems. All of this, coupled with the **recent increase in cyberattacks*** (malware, phishing, ransomware, etc.) carried out by hackers to exploit these **vulnerabilities**, means that, in this situation, it is more important than ever to **protect** and **monitor** all workstations, servers and devices that handle sensitive information and connect to systems both inside and outside the corporate network. In order to be able to carry out this process securely, it is important to implement the measures and technologies needed to start working from home without increasing the risks to your company’s security and the management of its IT resources.



* An increasingly common threat is phishing and SMS attacks using coronavirus. They claim to contain links to advice from healthcare authorities or files containing information about new cases in the victim’s area.

<https://www.proofpoint.com/us/threat-insight/post/coronavirus-themed-attacks-target-global-shipping-concerns>

<https://www.zdnet.com/article/hackers-are-scanning-for-vulnerable-vpns-in-order-to-launch-attacks-against-remote-workers/>

|Don't let coronavirus paralyze your business

Monitoring and managing computers and devices is now more important than ever, as is the ability to launch scripts and distribute software remotely.

Panda Security's advanced security and management solutions help you to simplify the management of all computers and devices, both inside and outside the corporate network. With them you can maintain the highest levels of protection so that your organization can continue to operate normally.

Panda Systems Management, included in the solutions Panda Fusion and Panda Fusion 360, is a management, support and monitoring tool for any kind of device. Panda Systems Management is a set of technologies grouped into a simple platform, created for the purpose of remotely controlling and managing servers, workstations, and other network devices. This way, IT departments can manage all their users' devices from a single platform, responding quickly and efficiently to any problems.

What recommendations or measures should a company implement to ensure proper management and use of its systems?

- 1 Configure VPNs remotely for secure access
- 2 Centrally deploy the software essential for remote work, such as MS Office 365, file-sharing tools, etc.
- 3 Deploy critical security updates on computers, laptops and servers to patch system vulnerabilities.
- 4 Remote monitoring and support: the ability to resolve incidents without having to travel or to deploy software on computers for employees to be able to carry on as normal.
- 5 Automate the computer maintenance and management tasks that save most time, reducing costs and increasing efficiency.
- 6 Have a ticketing system to reduce response times and allow knowledge sharing among technicians, optimizing the IT department's operations.
- 7 Centralized management and control of the entire infrastructure: Hardware and software inventory, system change logs, license control and detailed reports.

|The solution Panda Systems Management: Centralized Remote Monitoring and Management (RMM**)

The solution **Panda Systems Management** allows you to manage, monitor and maintain all of your organization's systems remotely, both if they are in the office or decentralized.

It facilitates the centralized management and support of all computers and devices thanks to the simplicity that its pre-configuration provides. This guarantees a practically flat learning curve, and helps you ensure that the whole IT infrastructure functions as it should.

How Panda Systems Management helps you resolve remote management for your systems: **Panda Systems Management** makes IT administration very simple and efficient through the following **features**:

- **Non-intrusive remote support:** connect to any device, even without an agent.
- **Software distribution and deployment:** centralized distribution and deployment of software and updates, controlling the entire process.

- **Patch management:** Automation of the deployment of updates and patches for the OS and installed third-party software. Patch management policies.
- **Task and script automation:** Create your scripts or download them from the ComStore and modify them according to your needs.
- **Management of mobile devices and tablets (MDM):** Password policies, usage control, geolocation, blocking, and remote data deletion.
- **Ticketing system:** Organization, classification and automatic resolution of incidents.
- **Alerts and Monitoring:** Graphs and real-time alerts about the usage of CPU, memory, hard drive, etc. Status reports, alerts, activity, performance, etc.
- **Control:** Establish controls to ensure backups are executed correctly and avoid losing information.

Panda Systems Management is a cloud-based solution that is managed via a single lightweight agent. It is compatible with Windows, Linux and macOS computers, and Android and iOS devices. All of this is done without impacting endpoint performance.

[More information about Panda Systems Management](#)



|The importance of protection against the growing number of cyberthreats

Cybercrime exploits fear and uncertainty.

As the COVID-19 crisis continues to disrupt healthcare, economic, political and social systems around the world, there is another threat not so visible: the increase in cyberattacks. Our increased dependence on digital tools, as well as the uncertainty we're living through, are being exploited by hackers to perpetrate these attacks.

Under these circumstances, teleworking has made cybercriminals change tactics; they now target vulnerabilities in employees' computers and systems. Among the techniques they use are searching for vulnerable VPNs to attack remote workers; phishing emails; SMS messages with links that claim to contain advice from medical organizations; or files supposedly containing information about new cases in the victim's area; etc.

In the digital world, clicking on the wrong link or entrusting your data to the wrong person can have a serious economic and reputational cost for the company.

So, how can we protect ourselves?

Business protection strategies include keeping systems and workstations healthy, verifying sources, updating the OS and patching third-party software. The most important thing, however, is to have an advanced cybersecurity solution to protect your organization.

cybercriminals
change tactics;
they now target
vulnerabilities
in employees'
computers and
systems.

|Panda Fusion. Advanced security, centralized management and remote support

Control and maximum protection from the first day.

Panda Fusion is a comprehensive solution that offers advanced security and centralized IT management for all the workstations, laptops and servers on your corporate network. Accessible from anywhere and at any time, Fusion is managed with a simple web browser, offering:

Maximum Protection:

- Multiplatform security against unknown (zero-day) threats, detection and blocking of malware, Trojans, phishing, and ransomware. Automatic analysis and disinfection of computers.
- Behavioral analysis: Detection of known and unknown malware.
- Security on Windows, Linux, macOS, and Android systems, as well as virtual environments (VMware, Virtual PC, MS Hyper-V, Citrix).

Simplify Management:

- Easy to maintain: No specific infrastructure is required to host the solution.

- Easy to protect remote users: Each protected computer communicates with the cloud; remote users and delegations are naturally without having to install anything.
- Easy to deploy: Includes multiple deployment methods.
- Cost saving thanks to the automation of infrastructure management and its centralized control.

Greater productivity:

- It implements anti-spam protection for Exchange servers to optimize users' work time and increase the security of the computers on the network.
- It monitors and filters web traffic, preventing employees from unproductive behavior or suffering security threats, such as bots or phishing.
- It doesn't require any specific infrastructure or maintenance, so the IT department can focus on more productive tasks.

How Panda Fusion helps you to protect yourself while allowing you to manage your systems:



{Security for all attack vectors: Browsing, email, file systems, and control of devices connected to endpoints.}



{Centralized management of security and product updates for all workstations and servers on the corporate network.}



{Control the protection of Windows, Linux, macOS and Android systems from a single web administration console.}



{HW & SW inventory and monitoring: Control and monitor all devices on your network, their performance, software, and licenses.}



{Deployment manager: Automatic and centralized patch management and software installation.}



{Remote support: With non-intrusive access, ticketing system and scripting.}

[More information about Panda Fusion](#)



|Panda Fusion 360

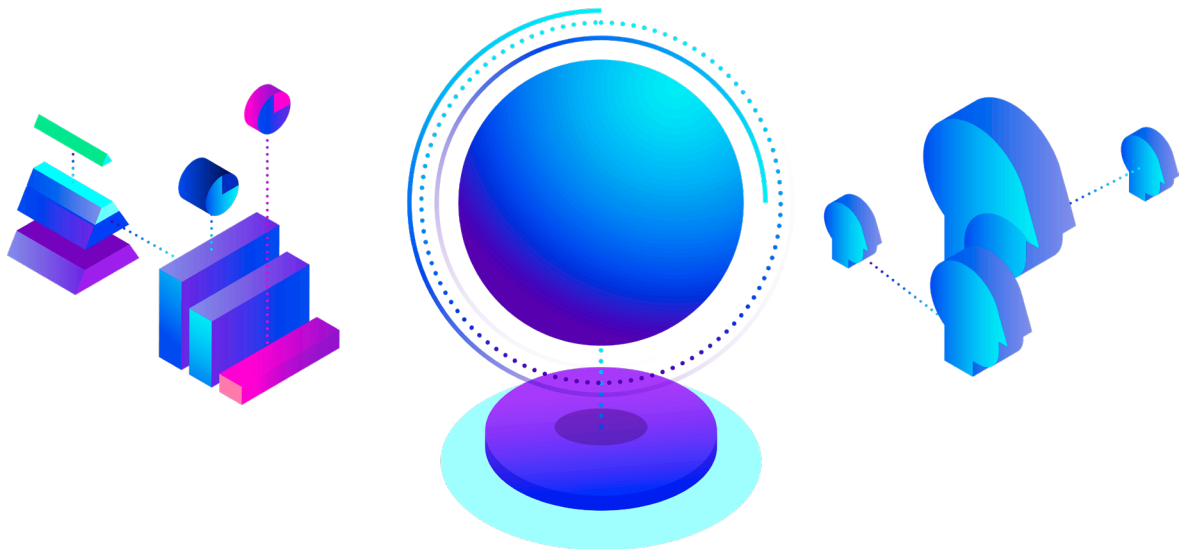
Automated advanced security, centralized management, and remote support.

Panda Fusion 360 includes exactly the same management and control technologies as Panda Fusion and Panda Systems Management. Unlike these two solutions, however, it includes the most advanced cybersecurity solution in Panda Security's product portfolio: Panda Adaptive Defense 360. This solution provides Panda Fusion 360 with the following capabilities:

Automation of prevention, detection, containment and response for any advanced threat, zero-day malware, ransomware, phishing, in-memory exploits, and malwareless attacks, present and future, inside and outside the corporate network.

It differs from the other solutions in that it combines the widest range of protection technologies (EPP) with automated EDR capabilities. All of this together with its two services managed by Panda security experts, which are the solution's calling cards:

- 100% Classification Service for processes.
- Threat Hunting and Investigation Service.



Panda Fusion 360's security model brings your organization the following benefits:



Automates and reduces detection time:

- Blocking of application that pose a security risk (by hash or process name).
- It blocks threats, zero-day malware, fileless/malwareless threats, ransomware and phishing from running.
- It detects and blocks malicious in-memory activity (exploits), before it can cause any damage.
- It detects malicious processes that have evaded static preventive measures.
- It detects and blocks hacking tactics, techniques, and procedures.



It automates and reduces response and investigation time:

- Resolution and Response: Forensic information to thoroughly investigate each attempted attack, and tools to mitigate their effects (disinfection).
- Traceability of each action: Actionable visibility of the attacker and their activity, facilitating the forensic investigation.
- Improvement and adjustments in security policies thanks to the conclusions of the forensic analysis.



Simplifies and minimizes security costs:

- Its managed services reduce the costs of expert personnel. There are no false alerts to manage and no responsibility is delegated.
- Managed services automatically learn from threats. Don't spend time on manual settings.
- Maximum prevention on the endpoint. Reduce operating costs to near zero.
- There is no management infrastructure to install, configure or maintain.
- Endpoint performance is not impacted, since it is based on a lightweight agent and a fully cloud-based architecture.

In short, Panda Fusion 360 combines the best of both worlds. The advanced and adaptive security of Panda Adaptive Defense 360 to stop all sorts of threats, with the management, monitoring and remote support offered by Panda Systems Management.

[More information about Panda Fusion 360](#)



Thanks to Panda Security's advanced security and IT management solutions, your company doesn't have to stop.

Panda Fusion

[Get your free Trial](#)



Panda Fusion 360

[Live Demo](#)

